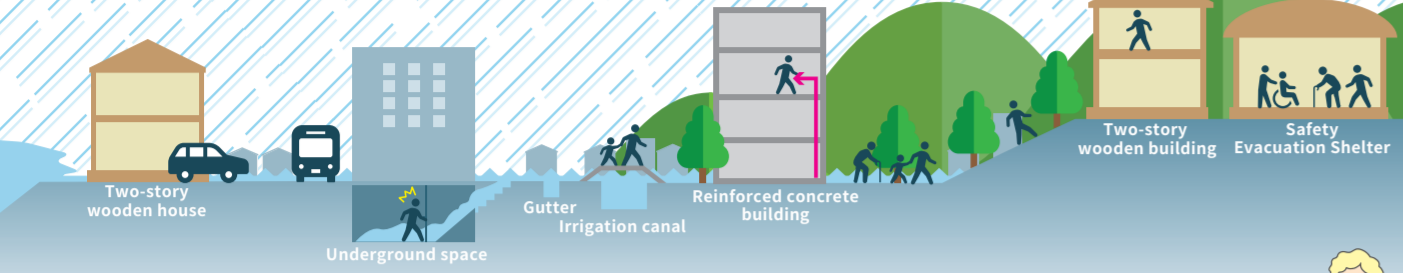


Nakashima River System

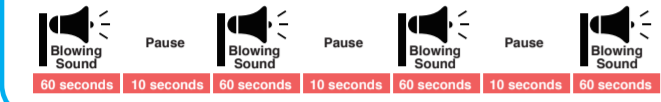
Flood Hazard Map

This hazard map shows the presumed "Level of Flooding" and the location of "Safety Evacuation Shelters" in the event that the Nakashima River and the Nishiyama River in the Nakashima River System flood from the expected maximum amount of rainfall. Nagasaki City's terrain makes it is easy for buildings to suffer damage during heavy local downpours. It is important to know beforehand which areas are risk areas and how to safely evacuate from them.



Dam Warning Station Siren

The dam warning station will blow a siren if there is a risk of rising river water due to dam releases. When the alarm sounds, immediately step away from the river and evacuate to a safe place.



Nagasaki City Wi-Fi

How to Get Online
You will have access for 60 minutes.
① Select "Nagasaki_City_Wi-Fi" on your smartphone.
② Enter your e-mail address to access Wi-Fi.

Information will be made available here about life in Nagasaki in multiple languages.
Nagasaki City International Affairs Division Facebook

For detailed disaster prevention information, scan the QR code!
Nagasaki City Website Flood Hazard Map

If flooding happens, first take action to protect your life!

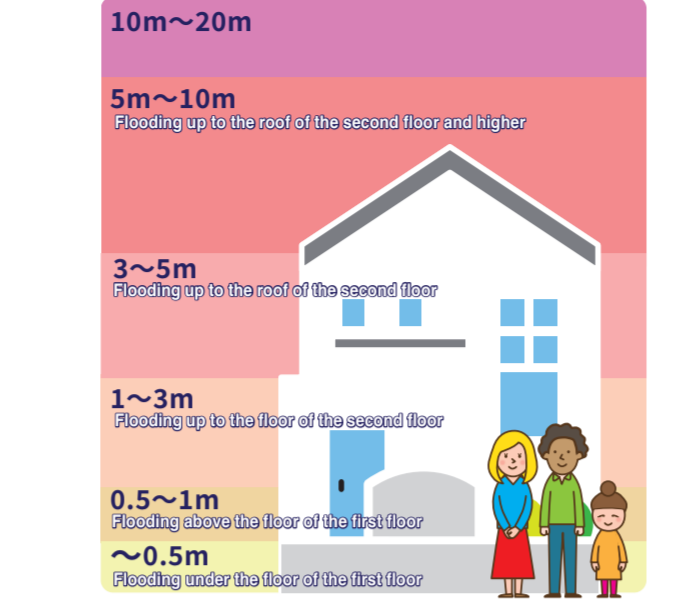
- Move away from **dangerous areas*** and gather information about the disaster.
- *Dangerous Areas:** Flood Risk Zone, Structural & Other Flood Damage Risk Zones
- As soon as an evacuation announcement is made, evacuate to **safe areas***.
- *Safe Areas:** Safety Evacuation Shelters/Areas, buildings taller than two stories
- Ask for help from any Japanese people around you.

Point to communicate when you're in a hurry!
急いでいるときは、指で差して伝えよう!

Please help me. I cannot speak Japanese.
助けてください。日本語が話せません。

Please take me to a Safety Evacuation Shelter.
避難所に連れて行ってください。

Flood Risk Zone 浸水の深さ/状況



Structural & Other Flood Damage Risk Zone
Areas at high risk of houses collapsing from flood
→ Immediate evacuation necessary

Area of Nagasaki Heavy Flooding in 1982

Landslide 土砂災害

Special Warning Area 特別警戒区域
Warning Area 警戒区域
*As of August 29, 2023

Legend 凡例	
Disaster Prevention Administrative Radio System 防災行政無線	
Dam Warning Station ダム警報機	
Dam Observation Station ダム観測所	
Live Camera ライフカメラ	
City Hall - Regional Office 市役所・地域センター	
Police 警察110	
Fire Department 消防119	
Disaster Base Hospital 災害拠点病院	
Underground Passage 地下歩道	
Water Level Observation Station 水位観測所	
JR Line JR線	
Streetcar 路面電車	
Targeted rivers in flood risk areas 浸水想定区域の対象河川区間	
Other rivers, ponds and marine areas その他の河川、湖沼、海域	

Safety Evacuation Shelter 避難所

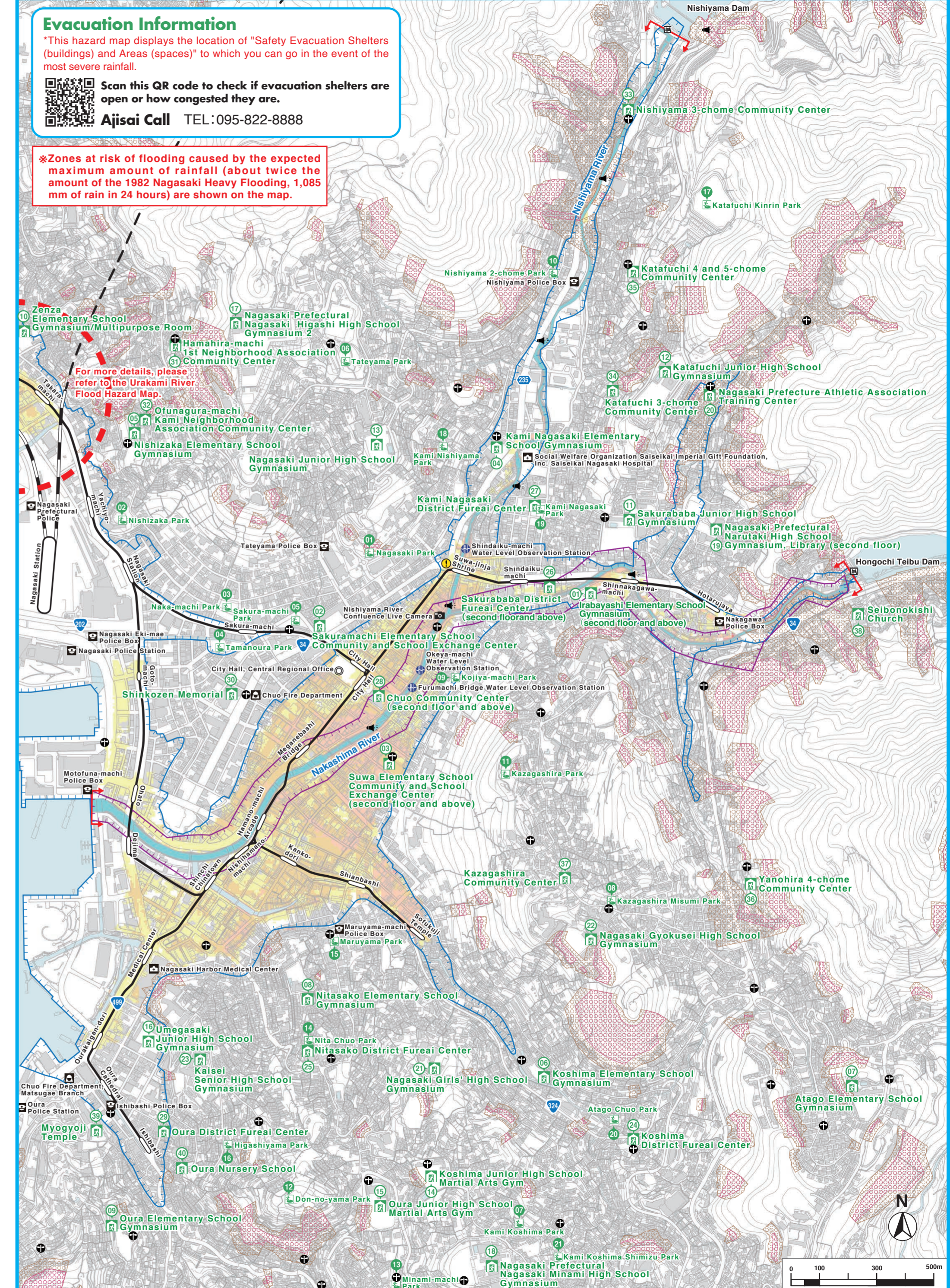
Buildings at which you can temporarily stay if you cannot stay in your home due to a disaster.
(Facilities that are colored in on the map are located in flood risk zones)

01 Irabayashi Elementary School Gymnasium (second floor and above)	伊良林小学校 体育館(2階以上)
02 Sakuramachi Elementary School Community and School Exchange Center	桜町小学校 地域学校交流センター
03 Suwa Elementary School Community and School Exchange Center (second floor and above)	諏訪小学校 地域学校交流センター(2階以上)
04 Kami Nagasaki Elementary School Gymnasium	上長崎小学校 体育館
05 Nishizaka Elementary School Gymnasium	西坂小学校 体育館
06 Koshima Elementary School Gymnasium	小島小学校 体育館
07 Atago Elementary School Gymnasium	愛宕小学校 体育館
08 Nitasako Elementary School Gymnasium	仁田佐古小学校 体育館
09 Oura Elementary School Gymnasium	大浦小学校 体育館
10 Zenza Elementary School Gymnasium/Multipurpose Room	銭座小学校 体育館・多目的室
11 Sakurababa Junior High School Gymnasium	桜馬場中学校 体育館
12 Katakuchi Junior High School Gymnasium	片瀨中学校 体育館
13 Nagasaki Junior High School Gymnasium	長崎中学校 体育館
14 Koshima Junior High School Martial Arts Gym	小島中学校 武道場
15 Oura Junior High School Martial Arts Gym	大浦中学校 武道場
16 Umeasaki Junior High School Gymnasium	梅香中学校 体育館
17 Nagasaki Prefectural Nagasaki Higashi High School Gymnasium 2	県立長崎東高等学校 第2体育館
18 Nagasaki Prefectural Nagasaki Minami High School Gymnasium	県立長崎南高等学校 体育館
19 Nagasaki Prefectural Narutaki High School Gymnasium, Library (second floor)	県立崎高高等学校 体育館・図書館2F
20 Nagasaki Prefecture Athletic Association Training Center	長崎県体育協会スポーツ合宿所
21 Nagasaki Girls' High School Gymnasium	長崎女子高等学校 体育館
22 Nagasaki Gyokusei High School Gymnasium	長崎玉成高等学校 体育館
23 Kaisei Senior High School Gymnasium	海星高等学校 体育館
24 Koshima District Fureai Center	小島地区ふれあいセンター
25 Nitasako District Fureai Center	仁田佐古地区ふれあいセンター
26 Sakurababa District Fureai Center (second floor and above)	桜馬場地区ふれあいセンター(2階以上)
27 Kami Nagasaki District Fureai Center	上長崎地区ふれあいセンター
28 Chuo Community Center (second floor and above)	中央公民館(2階以上)
29 Oura District Fureai Center	大浦地区ふれあいセンター
30 Shinkozen Memorial	新興善メモリアル
31 Hamahira-machi 1st Neighborhood Association Community Center	浜平町第1自治会公民館
32 Ofunagura-machi Kami Neighborhood Association Community Center	船越町自治会公民館
33 Nishiyama 3-chome Community Center	西山3丁目公民館
34 Katakuchi 3-chome Community Center	片瀨3丁目公民館
35 Katakuchi 4 and 5-chome Community Center	片瀨4・5丁目公民館
36 Yanohira 4-chome Community Center	矢の平4丁目公民館
37 Kazagashira Community Center	風頭公民館
38 Seibonkishi Church	聖母の騎士教会
39 Myogyoji Temple	妙行寺
40 Oura Nursery School	大浦保育園

Safety Evacuation Area 避難場所

Places at which you can temporarily stay to escape from disasters.

01 Nagasaki Park	長崎公園
02 Nishizaka Park	西坂公園
03 Naka-machi Park	中町公園
04 Tamanoura Park	環の浦公園
05 Sakura-machi Park	桜町公園
06 Tateyama Park	立山公園
07 Kami Koshima Park	上小島公園
08 Kazagashira Misumi Park	風頭みすみ公園
09 Kojiya-machi Park	麹屋町公園
10 Nishiyama 2-chome Park	西山2丁目公園
11 Kazagashira Park	風頭公園
12 Don-no-yama Park	どんの山公園
13 Minami-machi Park	南町公園
14 Nita Chuo Park	仁田中央公園
15 Maruyama Park	丸山公園
16 Higashiyama Park	東山公園
17 Katakuchi Kinrin Park	片瀨近隣公園
18 Kami Nishiyama Park	上西山公園
19 Kami Nagasaki Park	上長崎公園
20 Atago Chuo Park	愛宕中央公園
21 Kami Koshima Shimizu Park	上小島清水公園



*Flood risk zones are based on a map of flood risk zones designated by the Nagasaki Prefectural Government on August 31, 2018 for the Nakashima River and on July 1, 2022 for the Nishiyama River in the Nakashima River System in accordance with the Flood Control Act.
*This hazard map shows the presumed level of flooding due to an overflow of the Nakashima River and Nishiyama River in the Nakashima River System. However, areas outside of these risk zones may experience flooding and/or the presumed level of flooding may differ in reality.
*The 1982 Nagasaki Heavy Flooding (flooded area) shown on the map is based on the Disaster History Map (flood areas caused by heavy rain and precipitation in July 1982) of the Ministry of Land, Infrastructure, Transport and Tourism, and revised with reference to the Nagasaki Torrential Rain Disaster Map of October 1982.
*This hazard map displays the location of "Safety Evacuation Shelters (buildings) and Areas (spaces)" to which you can go in the event of the most severe rainfall.
*This map was made with the approval of the mayor of Nagasaki and reproductions of survey results made by the city. (Approval Number R5FVNP-C-118)